

# COLOUR PALETTE

Compliment or contrast



From the fiery tones of Australia's outback to the green and grey of the bush.

Hi-Tech's range of colours allows you to compliment or contrast with your surroundings, to create stunning looks limited only by your imagination.



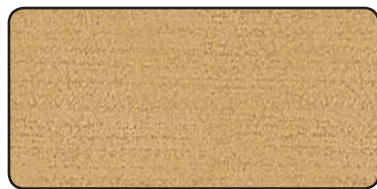
Sandy Beige ●●



Sandstone ●●



Fawn ●



Harvest Gold ●



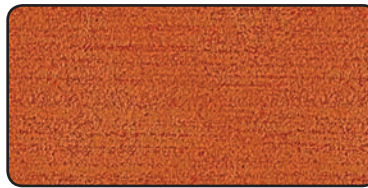
Western Sand ●



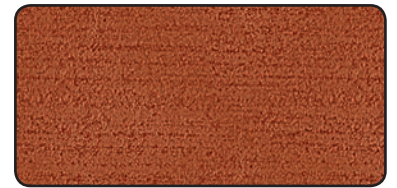
Autumn Tan ●●



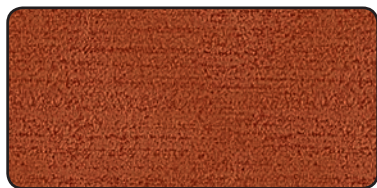
Leather ●



Terracotta ●●



Burnt Orange ●●



Brick Red ●●



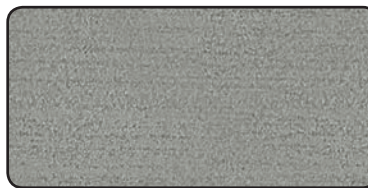
Mushroom ●



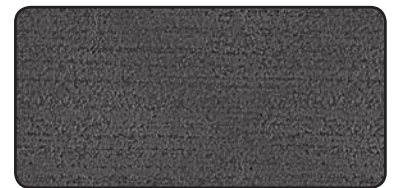
Walnut ●



Coffee Brown ●●



Shale Grey ●●



Storm Grey ●●



Bluestone ●●



Charcoal ●



Black ●●

**Available in:**

● Colour Hardener  
Ezi-Spray (Spray-On)  
Colour Sealer

● Release Agent for  
Stamped Concrete

Hi-Tech's colours are formulated to stay looking beautiful year after year. Our colour hardeners are of the highest quality, complying with strict Australian standards. Only UV resistant pigments complying with World Standards (see technical information) are used to ensure vibrant and long-lasting concrete surface colours. A blend of different dried silica sand sizes are used in correct proportions to create a dense and hard-wearing surface finish.



**COLOUR DISCLAIMER:** All colours are suitable for stencil, spray-on and stamped concrete methods. Colours based on colour hardener colours, slight variations will occur with spray on & coloured sealers. Please note, colours in this brochure are reproduced as accurately as modern printing allows. Variations in colour may occur depending on the job conditions and process used by your contractor. Hi-Tech Stencilcrete regrets it cannot be responsible for any variations in colour.

HI/10/15